

# Cashbuild

QUALITY BUILDING MATERIALS, TOOLS, PAINT AND HARDWARE AT THE LOWEST PRICES

**FREE**  
LOCAL DELIVERY



FOR FURTHER DISTANCES ENQUIRE IN-STORE.

The advertised rates are estimate rates and are subject to change if the road conditions vary and if areas are not accessible. Handling fee applies to bricks, blocks, concrete roof tiles and cement. Enquire in-store for details.

# NGQAMAKWE GRAND OPENING

## 30 April 2026 at 7:00am

Address: R 409 NGQAMAKWE CASHBUILD • Tel: 047 491 0035

### PAINT



**DURAM**  
WALL & CEILING  
20L WHITE  
SKU: 301945

**989<sup>95</sup>**



**DURAM**  
ROOFKOTE  
20L RED  
SKU: 301363

**989<sup>95</sup>**



**DURAM**  
RUBBERFLEX 20L  
BURGUNDY  
SKU: 326961

**1869<sup>95</sup>**



**DURAM**  
FLEXIKOTE + FREE  
MESH 5L CHARCOAL  
SKU: 300598

**199<sup>95</sup>**



**MACKAY**  
CONTRACTOR  
PVA 20L WHITE  
SKU: 323274

**257<sup>95</sup>**



**SAFARI**  
PVA 20L  
WHITE  
SKU: 306182

**462<sup>95</sup>**



PAINT COLOUR TINTING  
AVAILABLE IN-STORE

### TIMBER



#### TIMBER SABS CCA

38x38  
6.0m SKU: 171601

**80<sup>95</sup>**

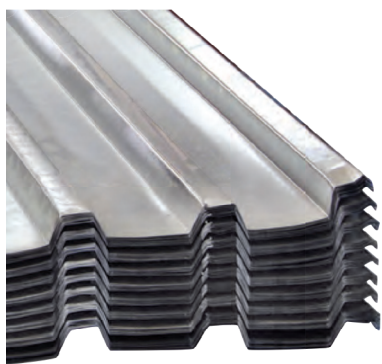
38x114  
6.0m SKU: 191601

**207<sup>95</sup>**

50x76  
6.0m SKU: 181601

**210<sup>95</sup>**

### ROOFING



0.4mm FH  
0.686X6m  
SKU: 620

**497<sup>95</sup>**



**HUT TOP**  
GALVANIZED  
710mm  
SKU: 324339

**289<sup>95</sup>**



**ROOF SCREW**  
ECONO 90mm  
Q100  
SKU: 307273

**72<sup>95</sup>**

**NAILS SABS**  
4x100mm  
1kg SKU: 8734

**47<sup>95</sup>**

**JOIN**

Cashbuild  
**SHOPper**  
INSTORE



STAND A CHANCE TO WIN PRIZES:

**5 x R1 000 STORE VOUCHERS**  
**5 x R200 AIRTIME VOUCHERS**



**Saturday**  
**3 May**  
**in-store**  
**at 12pm**

T's & C's Apply

TRADING HOURS: Mon - Fri: 07:00-18:00 • Saturday: 07:00-16:00 • Sunday: 08:00-14:00

cashbuild.co.za  
SHARECALL 0860 100 582

290 STORES IN SOUTHERN AFRICA & EXPANDING

**1**

# GRAND OPENING

## BUILDING PRODUCTS



**BLOCK CONCRETE M6**  
390x1890x70mm  
SKU: 1099216

**13<sup>90</sup>**



**BRICK CEMENT STOCK**  
220x100x70mm  
SKU: 1099954

**3<sup>70</sup>**

Minimum order quantities apply to direct bricks and blocks. Enquire in-store for quantities. Please note that due to different manufacturing processes, dates and batches, the colour of advertised products may differ from that of the actual products in-store.



**PEDESTAL PIT PLASTIC BLACK**  
SKU: 501524

**554<sup>95</sup>**



**DPC SHEETING NSABS 250mic**  
3m x 30m  
SKU: 9716

**1284<sup>95</sup>**

## PLUMBING

**FONTAINE SINK MIXER WALL MOUNT (Q816-05)**  
SKU: 317554



**439<sup>95</sup>**

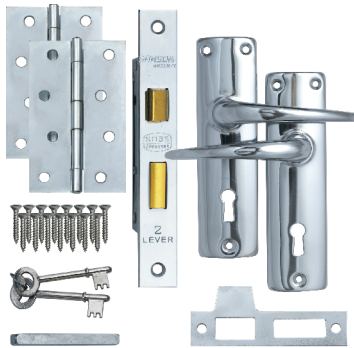
## GAS STOVE



**STAINLESS STEEL 2 BURNER GAS STOVE**  
SKU: 322918

**659<sup>95</sup>**

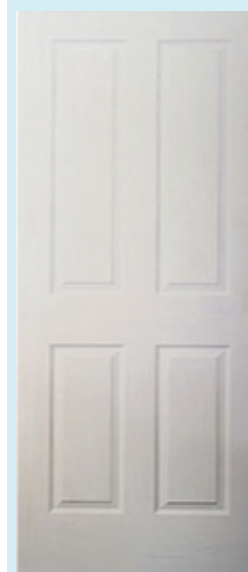
## LOCKSETS



**LOCKSET KEY SABS WITH HINGE 2L 6IN**  
SKU: 323349

**179<sup>95</sup>**

## DOORS



**DOOR DEEP MOULDED 4 PANEL STANDARD**  
SKU: 211405

**429<sup>95</sup>**



**DOOR WOOD EBONY HORIZONTAL PIVOT SET**  
SKU: 241821

**5984<sup>95</sup>**

## TILES



**FLOOR TILE GALILEO GREY**  
500mm x 500mm  
2m<sup>2</sup>  
SKU: 322013

**139<sup>95</sup>**  
p/m<sup>2</sup>



**FLOOR TILE CARARA POLARIS**  
600mmx600mm  
1.44m<sup>2</sup>  
SKU: 324757

**152<sup>95</sup>**  
p/m<sup>2</sup>



**EZEE TILE ADHESIVE CONTRACTORS 20kg**  
SKU: 628569

**54<sup>95</sup>**

## GARDENING



**SAVE EVERY DROP**

**AFRICA TANK WATER TANK 2500L**  
SKU: 315545

**2199<sup>95</sup>**

**5000L**  
SKU: 315546

**5524<sup>95</sup>**



**AFRICA TANK TAP AND REDUCER**  
SKU: 58508

**104<sup>95</sup>**

**RYOBI BRUSH CUTTER PETROL 43CC**  
SKU: 326595

**2549<sup>95</sup>**



- 43cc 2-stroke engine built for power and endurance
- Includes 255mm 3-teeth blade and dual line bump-head for various vegetation
- Aluminium tube and solid steel drive shaft for maximum power transmission and minimal vibration
- Ergonomic handle to prevent an uneven load being placed on the user's back
- Centrifugal clutch with electronic ignition for easier starting

**Additional Information:**

Engine: 1.25 Kw, 2-stroke Fuel tank capacity: 1.25 L  
Max output: 1.25 Kw @ 7000 min-1 Nett weight: 7.5 kg



**DID YOU KNOW?**  
YOU COULD QUALIFY FOR A  
**HOUSING GRANT**

**ENQUIRE  
IN-STORE  
TODAY**



T's & C's Apply



**PRICES VALID UNTIL SUNDAY 31 MAY 2026**

Selected products could differ from picture shown. E&OE. All prices include 15% VAT. T's & C's apply.



**2**